

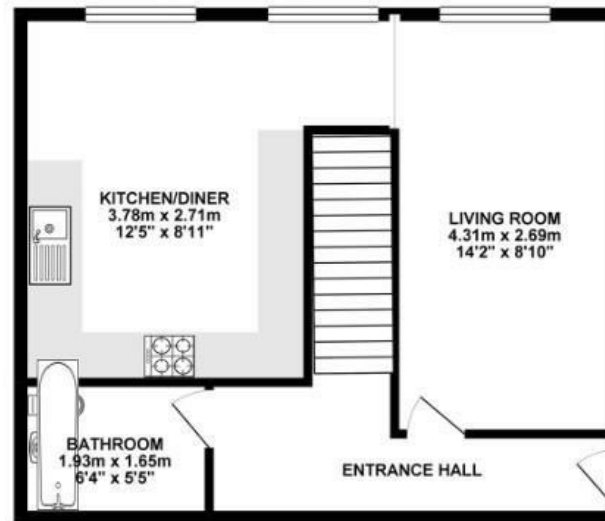
Victoria Street

CITY CENTRE

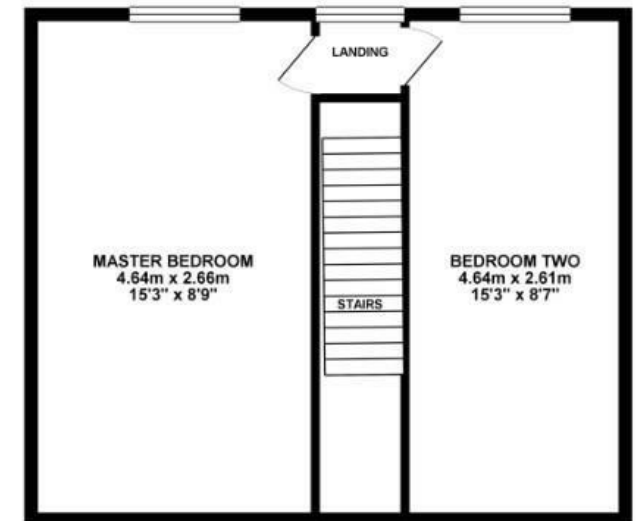
APPROXIMATE FLOOR AREA
56 SQM / 603 SQFT



GROUND FLOOR



1ST FLOOR



Illustrations are for reference purposes only, measurements are approximate, not to scale.

Boardwalk

Victoria Street , BRISTOL

£

£265,000

zzz

2 Bedrooms



BS1 6BN



1 Bathrooms

"The location of this flat has been perfect: open markets, cozy bars, and Castle Park are just around the corner. Living in the centre of town has been amazing, I hope the next owners enjoy it as much as I have."

